

# Fuses and relays Buick Cascada (2015-2019)

---

 [car-box.info/buick/cascada/2015-2019.html](http://car-box.info/buick/cascada/2015-2019.html)

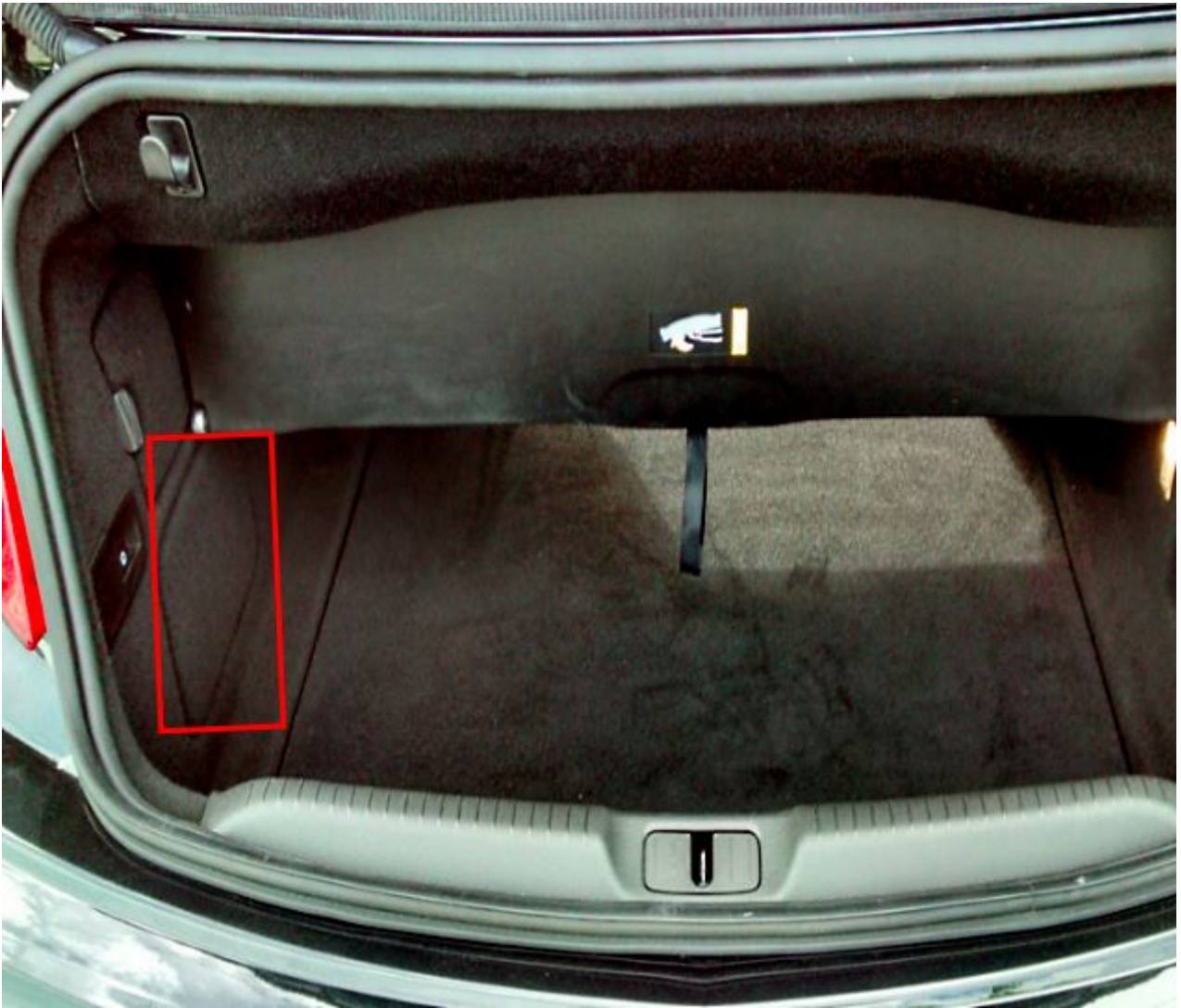
This material discusses in detail the fuse diagrams of the Buick Cascada (first generation): 2015, 2016, 2017, 2018, 2019 release.



Fuses #7 and #6 in the passenger compartment are responsible for the cigarette lighter and 12V power sockets.

## In the luggage compartment

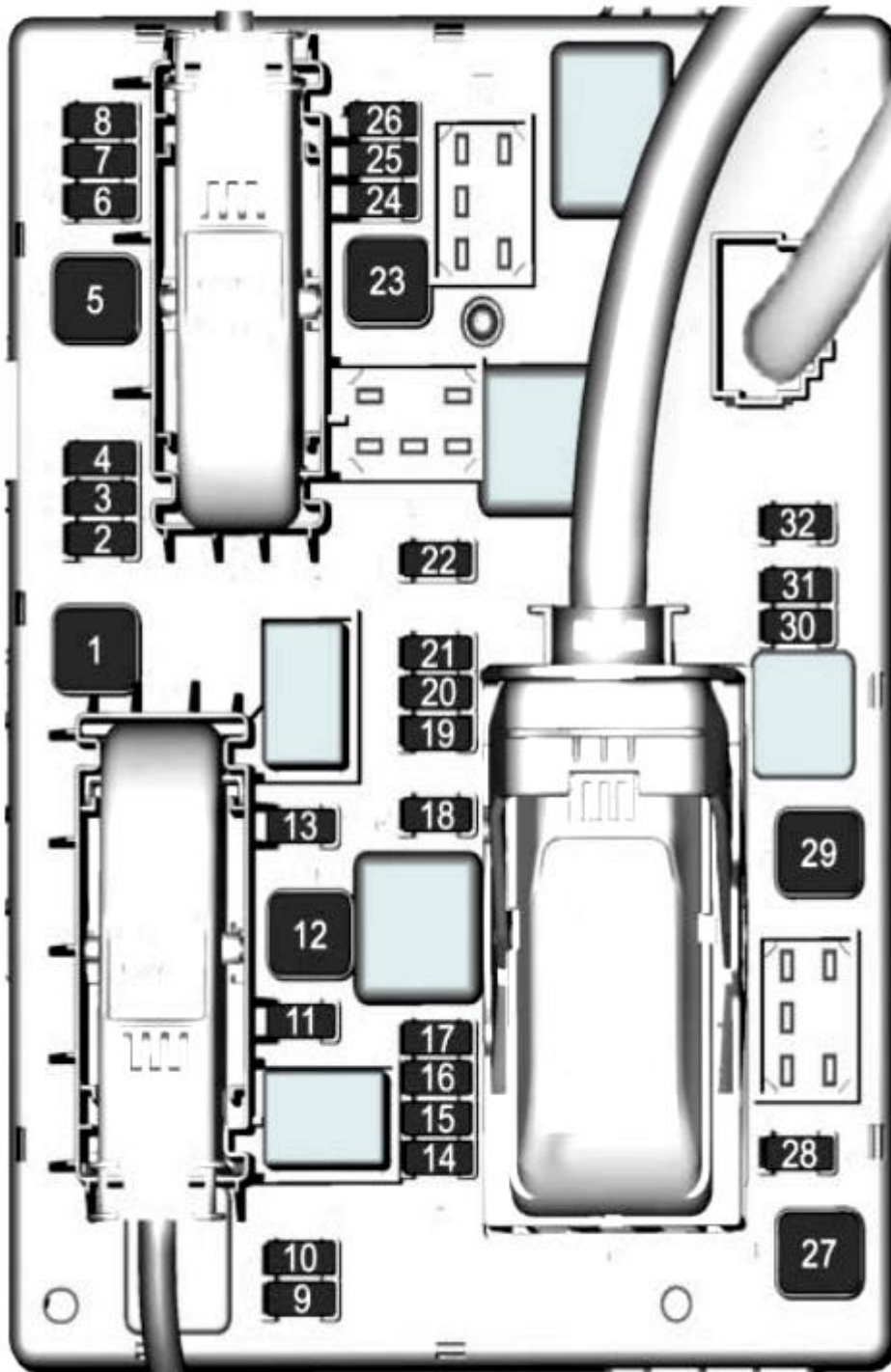
---



Located on the left side of the trunk, behind a cover.

### Diagram

## Diagram



No.	Description
-----	-------------

- |   |  |
|---|--|
| 1 | <ul style="list-style-type: none"> <li>• Right power rail</li> <li>• Convertible control module</li> </ul> |
|---|--|

2	Empty
---	-------

3	Rear parking assist module
---	----------------------------

## Diagram

4	Selective catalytic reduction system
5	Empty
6	Empty
7	Power seats module
8	Convertible control module
9	Selective catalytic reduction system
10	
11	<ul style="list-style-type: none"><li>• Rear vision camera</li><li>• Tire pressure monitor</li></ul>
12	<ul style="list-style-type: none"><li>• Reverse lamps</li><li>• Convertible control module</li></ul>
13	Empty
14	Rear seat electrical folding
15	Empty
16	<ul style="list-style-type: none"><li>• Convertible control module</li><li>• Rear vision camera</li></ul>
17	Empty
18	Empty
19	steering wheel heater
20	Empty
21	Heated seats
22	Empty
23	<ul style="list-style-type: none"><li>• Left power rail</li><li>• Convertible control module</li></ul>
24	Selective catalytic reduction system
25	Empty
26	Non-logistic mode

## Diagram

---

- 27
- Passive entry system
  - Passive start system
- 

28 Empty

---

29 Hydraulic unit

---

30 Empty

---

31 Empty

---

32 Empty

---

## In the passenger compartment

---



Fuse box located behind the glove box in the instrument panel.

## Diagram

## Diagram



No.	Description
1	Multimedia Displays
2	BCM/Exterior lamps
3	
4	Infotainment system
5	Instrument cluster / Infotainment system
6	<b>Buick Cascada cigarette lighter fuse / 12V Power outlets</b>
7	
8	BCM / Low-beam headlamp (Left side)

## Diagram

---

9	BCM / Low-beam headlamp (Right side)
10	BCM / Door locks module
11	Interior fan
12	Power seat module (Driver)
13	Power seat module (Passenger)
14	Diagnostic connector
15	Airbag system
16	Trunk lid relay
17	A/C system
18	Service diagnostic
19	BCM / Brake lamps / Reverse lamps / Interior lamps
20	Empty
21	Instrument panel
22	Ignition
23	BCM
24	BCM
25	Empty
26	12V power socket accessory in the trunk

---

## In the engine compartment

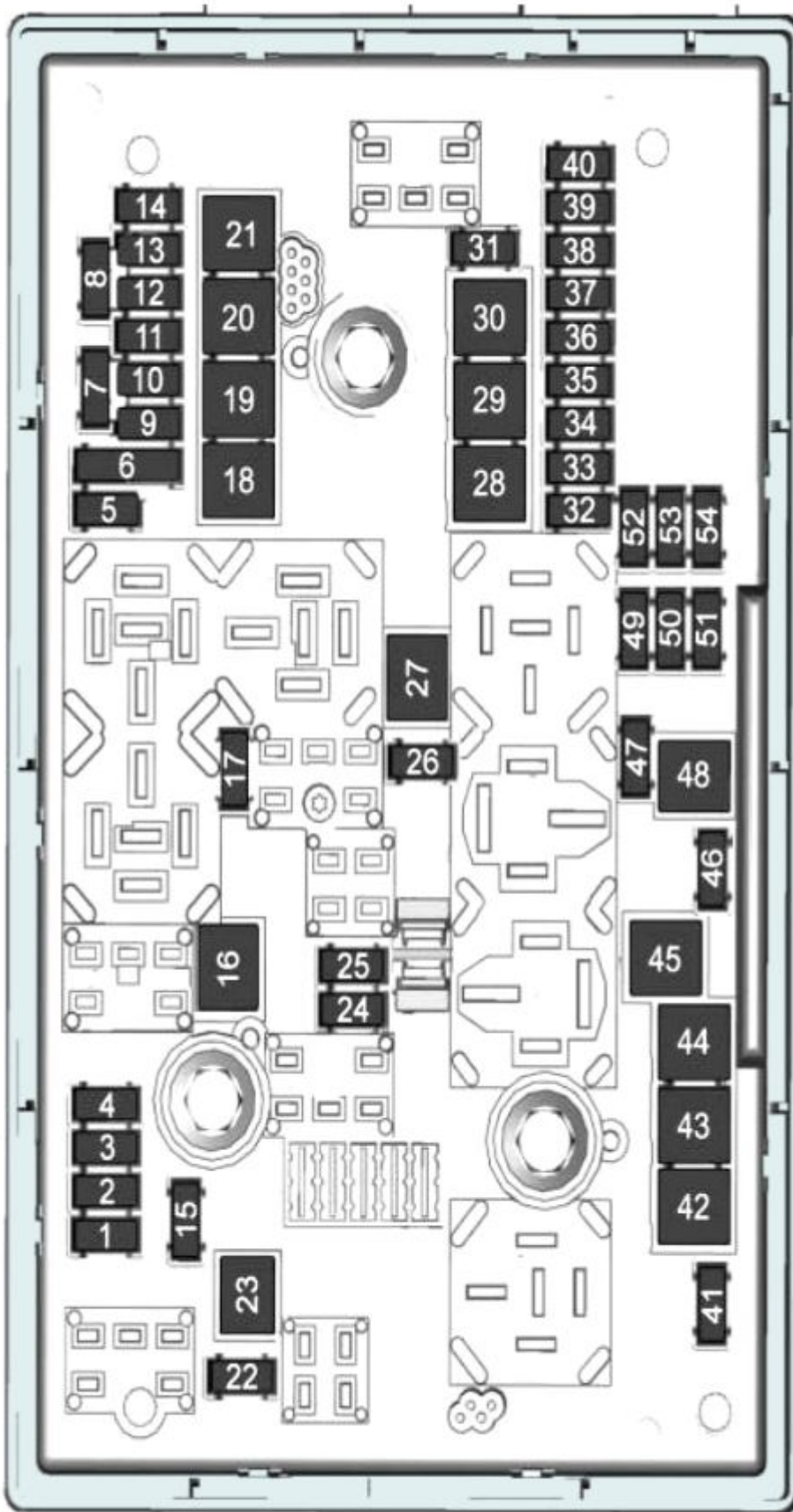
---



Located near the battery, behind the plastic cover.

**Diagram**

Diagram




---

No. Description

---

## Diagram

1	Engine control module (ECM)
2	O2 sensor
3	Fuel injection and Ignition system
4	
5	Empty
6	Heated mirrors
7	Fan control unit
8	O2 sensor and Powertrain cooling
9	Rear window sensor
10	Vehicle battery sensor
11	Trunk release
12	Adaptive headlamps module and Automatic headlamp leveling
13	ABS valves
14	Empty
15	Engine control module (ECM)
16	Starter
17	Transmission control module (TCM)
18	Rear window defogger
19	Front power window
20	Rear power window
21	Rear electrical center
22	Empty
23	Empty
24	High-beam headlamp (right side)
25	High-beam headlamp (left side)
26	Front fog lamps
27	Empty

## Diagram

28	Empty
29	Electric parking brake
30	ABS pump unit
31	Empty
32	Airbag system
33	Adaptive forward lighting/Automatic headlamp leveling
34	Exhaust gas recirculation
35	Power windows/Rain sensor/Exterior mirror
36	Climate control system
37	Empty
38	Vacuum pump
39	Fuel system control module
40	Front windshield washer
41	Empty
42	Engine cooling fan
43	Windshield wipers
44	Empty
45	Engine cooling fan
46	Empty
47	Horn
48	Engine cooling fan
49	<b>Buick Cascada fuel pump fuse</b>
50	Headlamp leveling system and Adaptive forward lighting system
51	Empty
52	Empty
53	TCM/ECM
54	Vacuum pump / Instrument panel cluster / HVAC unit