

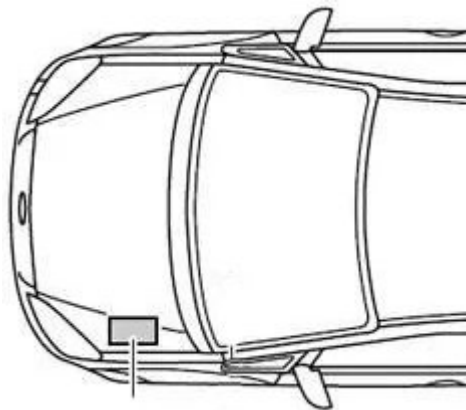
Fuses and relays Ford C-Max, 2003 - 2017

 car-box.info/ford/c-max/2003-2017.html

The compact MPV Ford C-Max has been produced in 2 generations since 2003. 1st generation was produced in 2004, 2005, 2006, 2007, 2008, 2009 and 2010. During this period, the car s-max was restyled. The 2nd generation was delivered to the markets in 2011, 2012, 2013, 2014, 2015, 2016, 2017, 2018, 2019 and to the present. In our material, we will show a description of the fuse boxes and relays ford with max with photos and block diagrams for the 1st and 2nd generation. Note the cigarette lighter fuse.

The design of the blocks depends on the year of manufacture, and the purpose of the circuit elements may differ from the one presented due to a possible difference in the level of electrical equipment C Max.

In the engine compartment



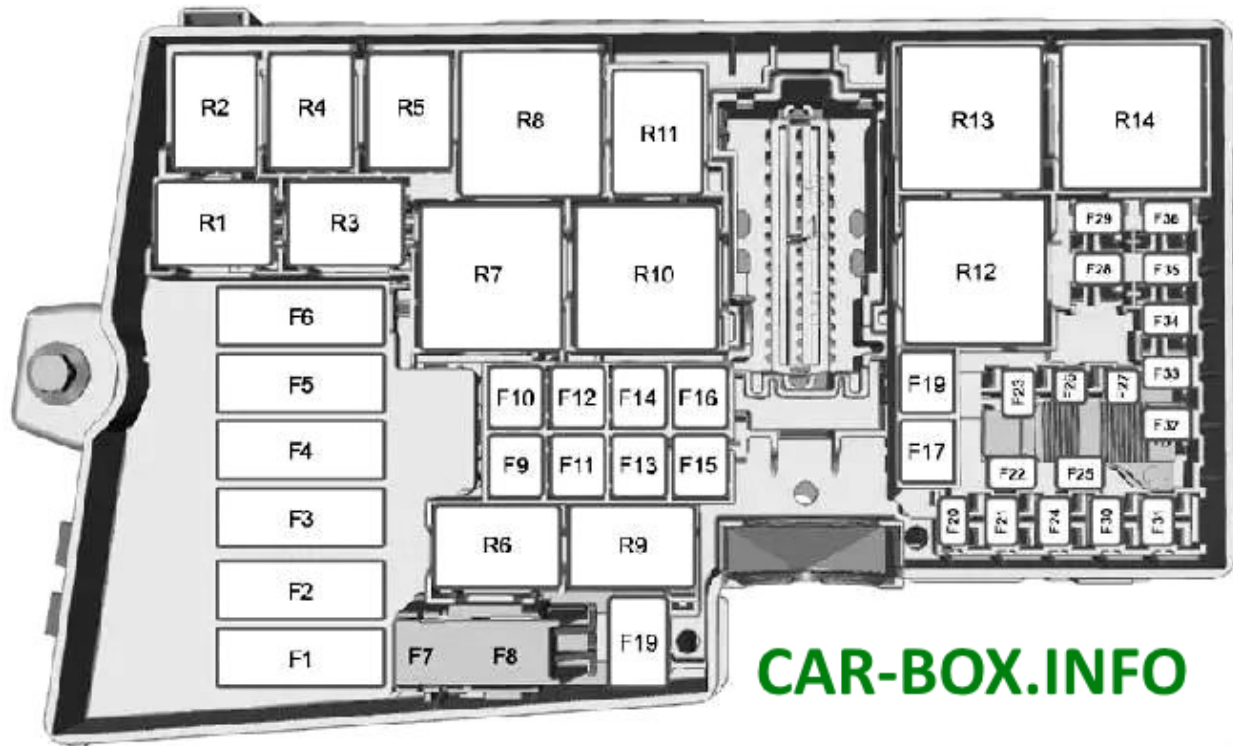
The main box of the engine compartment is located on the left side, under the protective cover.

Type 1

Models 2003 - 2010 release.

Diagram

Diagram



No	Description
1	40 / 60A Cooling fan
2	80A Power steering
3	60A Passenger compartment fuse box
4	60A Passenger compartment fuse box
5	80A Auxiliary heater
6	60A Diesel: Glow plugs
7	30A ABS, dynamic stability pump
8	20A ABS, dynamic stability valves
9	20A Engine control unit
10	30A Fan of the climate control system
11	20A Ignition lock
12	40A Ignition relay 15l
13	20A Starter
14	40A Heated windshield, right side

Diagram

15	30A Cooling Fan Relay (Sigma - Non-A / C Options Only)
16	40A Heated windshield, left side
17	30A Electronic parking brake
18	30A Inverter
19	10A ABS module
20	15A Sound signal
21	20A Diesel: Auxiliary heater
22	10A Power steering module
23	30A Headlight washer
24	15A Diesel: Auxiliary heater
25	10A Ignition relay
26	10 / 15A Automatic transmission control unit
27	10A A / C compressor clutch
28	10A Diesel: Glow plug control unit
29	10A Separate climate control system
30	3A Engine control unit, automatic transmission control unit
31	10A Intelligent battery charging
32	10A 2004-2007: 16V + VCT: Ventilation 2007-2010: Automatic transmission control unit
33	10A Gasoline: Heated oxygen sensors Diesel: Air intercooler bypass valve
34	10A Petrol: Injectors, ignition coils 2004-2007: Diesel: Fuel pump
35	10A Engine control unit, valves
36	10A Engine control unit
<i>Relay</i>	
R1	Starter lock (automatic transmission)
R2	Sound signal
R3	Reversing lamps (automatic transmission)
R4	Reserve

Diagram

R5 Diesel Preheating 16V + VCT: Ventilation

R6 Main relay

R7 Heated windshield

R8 Ignition

R9 headlight washer

R10 Heater

R11 Air conditioning

R12 Cooling fan (without air conditioning)

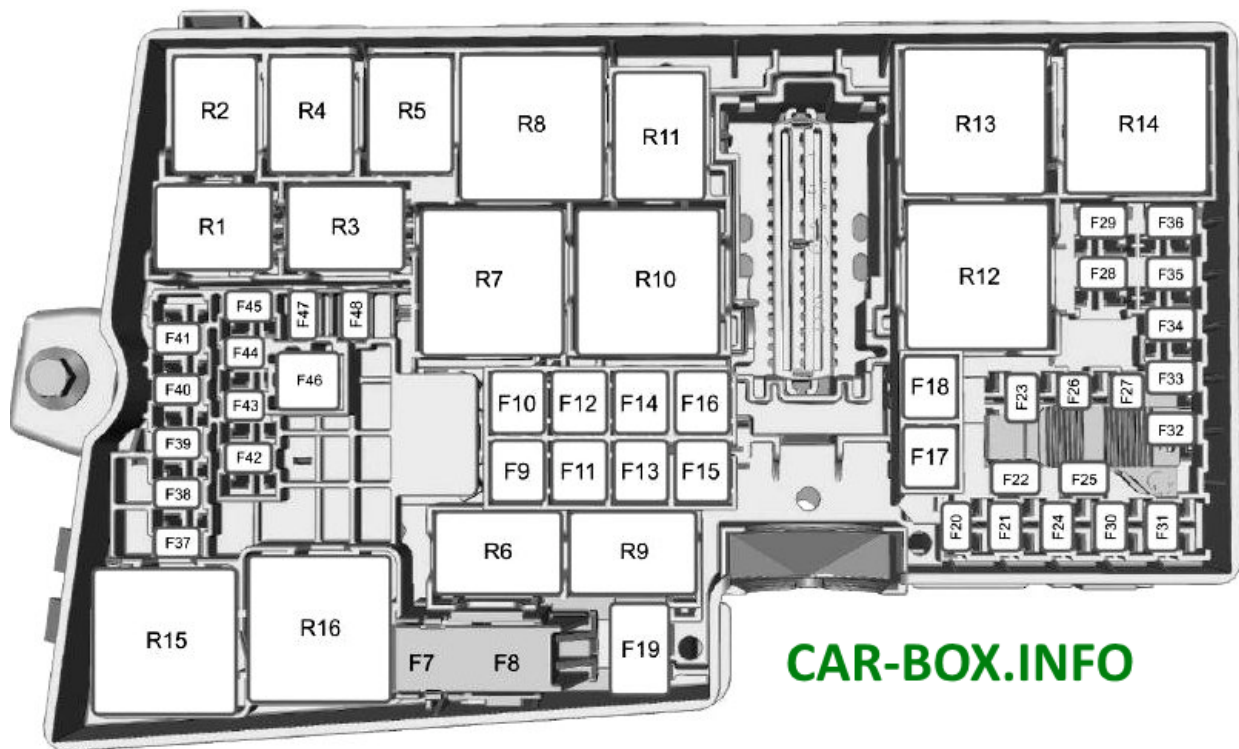
R13 Starter

R14 Power Management Cooling Fan

Type 2

Models 2011 - 2017 release

Diagram



Nº Description

F7 40A ABS pump

Diagram

F8	30A ABS valve
F9	20A Headlight washers
F10	40A Heater Fan
F11	30A Voltage quality module, start-stop system
F12	30A Relay, engine management system
F13	30A Starter relay
F14	40A Heated windscreen, right side
F15	25A Intercooler Fan - 1.0L EcoBoost, Cooling Fan Relay
F16	40A Heated windscreen, left side
F17	20A Combustion heater
F18	20A Windshield wipers
F19	5A Antilock Braking System, Dynamic Stability Control Module
F20	15A Buzzer
F21	5A Brake light switch
F22	15A Battery Monitoring System
F23	5A Relay Coils, Light Switch Control Module, Engine Control Module (15A), Gearbox Control Unit (15A), Gearbox Oil Pump (15A)
F24	20A Rear electrical outlet
F25	10A Exterior mirrors, electric
F26	15A Powertrain control unit
F27	15A Air conditioning compressor clutch
F28	Reserve
F29	25A Heated rear window
F30	5A Powertrain control unit
F31	Reserve
F32	10A EGR Valve, Swirl Control Valves, Heated Exhaust Oxygen Sensor (Engine Control Systems), Electronic Fan Control Module (Coil) Relay, Auxiliary Water Pump Module - 1.0L EcoBoost Engine
F33	10A Ignition coils

Diagram

F34	10A Injectors
F35	5A Intercooler relay coil, 15A Fuel filter heating, 10A Water in fuel sensor (1.5L, 2.0L), ECM, ignition coils
F36	10A Powertrain control unit, 5A Active radiator shutter
F37	Reserve
F38	15A Powertrain control module, transmission control module
F39	5A Headlamp control module
F40	5A Electric power steering
F41	20A Body electronics unit
F42	15A Rear window cleaner
F43	15A Headlight range control
F44	5A Adaptive cruise control
F45	10A Heated washer nozzles
F46	25A Power windows (front windows), Cooling fan
F47	7.5A Heated exterior mirrors
F48	15A Diesel combustion product filter evaporator

Relay decoding

R1	Intercooler fan
R2	Sound signal
R3	Diesel flue gas filter evaporator, Hybrid plant
R4	Wiper
R5	headlight washer
R6	Wiper (high / low speed)
R7	Heated windshield
R8	Cooling fan
R9	Reserve
R10	Cooling fan
R11	A / C compressor clutch

Diagram

R12 Cooling fan

R13 Heater

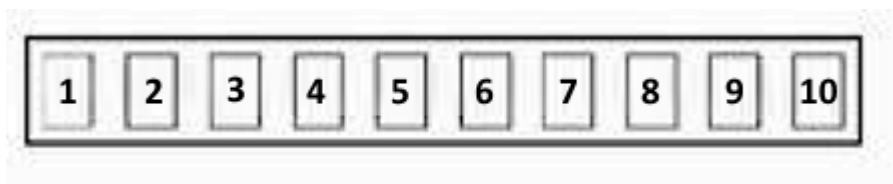
R14 The engine control unit

R15 Starter

R16 Ignition

Power fuse panel

It is located next to the main one and consists of high power fusible links.



1 (80A) Power steering control module

2 (150A) Starter

3 (100A)

4 (50A) Multifunction control module

5 (80A) Auxiliary heater

6 (70A) Luggage compartment fuse / relay box

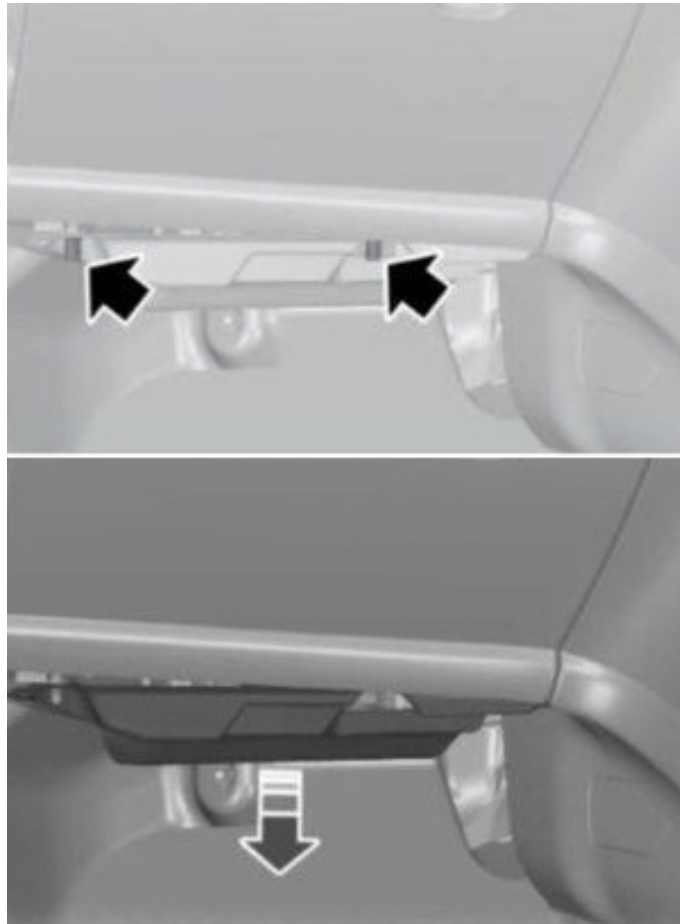
7 (60A)

8 (50A) Cooling fan motor control module

9 (50A) Multifunction control module

10 (60A) Glow plug control module

In the passenger compartment

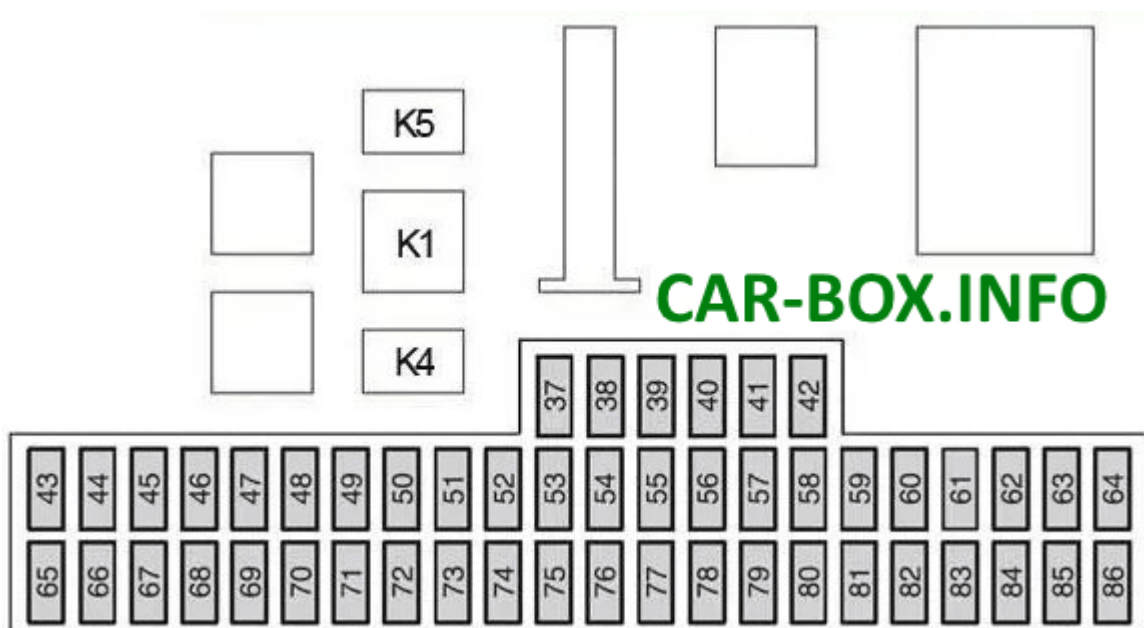


Fuse box located under the glove compartment, behind the trim. Mounted on two elements.

Type 1

Models 2003 - 2007 release.

Diagram



Diagram

№	Description
37	10A High beam left headlight
38	10A High beam, right headlight
39	20A Cigarette lighter , rear socket
40	20A Sunroof
41	20A Front passenger door electrical module
42	7,5A Heated mirrors
43	10A Electronic modules (battery powered)
44	10A Diagnostic connector (OBD II)
45	10A Daytime running lights
46	10A Instrument cluster, multifunction electronic module (GEM)
47	15A Washer pump, heated washer jets
48	20A Low beam headlights, daytime running lights
49	15A Light Switch
50	20A Windshield wiper
51	15A Fuel pump
52	25A Heated rear window
53	7.5A Side light on the left side
54	7.5A Side light on the right side
55	20A Driver's door electrical module, central locking
56	20A Keyless entry system
57	10A Siren anti-theft system
58	15A Audio system (battery powered)
59	25A Socket in the luggage compartment, trailer connector
60	15A Low beam right headlight
61	15A Low beam left headlight
62	20A Electric driver's seat adjustment

Diagram

63	25A Windows
64	Reserve
65	10A Airbags
66	7.5A Headlight range control, low beam headlights, xenon module
67	10A Immobilizer (WFS), instrument cluster (powered by ignition switch)
68	7.5A Radio, instrument cluster
69	Fog light
70	10A Electronic modules (powered by ignition switch)
71	10A Daytime running lights
72	25A Multifunction Electronic Module (GEM)
73	7.5A License plate lighting
74	15A Brake light
75	10A Transmission control unit, electric gas pedal
76	7.5A Electric parking brake
77	25A Central locking relay
78	15A Rear window wiper
79	15A Electric folding mirrors
80	10A Interior lighting, power mirrors
81	20A Electrical module right rear door
82	20A Module electrical equipment of the left rear door
83	10A CD Changer, Rear Seat Entertainment (RSE)
84	10A Reversing lamps, trailer connector
85	10A Cooling system
86	20A Heated seats
K1	Heated rear window relay
K4	Fuel pump relay
K5	Daytime Running Lights relay

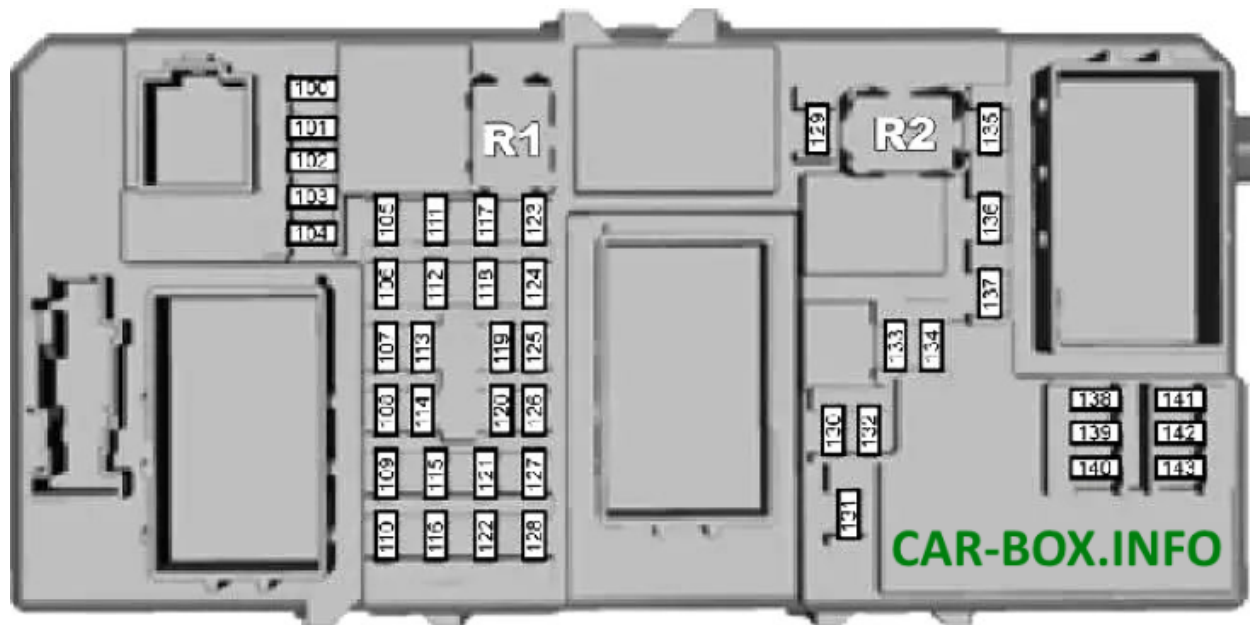
Diagram

The fuse number 39, 20A, is responsible for the Ford C-Max cigarette lighter.

Type 2

Models 2007 - 2010 release.

Diagram



No	Designation
----	-------------

100	10A Electronic modules (powered by ignition switch)
-----	---

101	20A Hatch, power driver's seat
-----	--------------------------------

102	10A Heater control, steering column, diesel particulate filter, remote control receiver
-----	---

103	10A Battery power supply for external lighting controls
-----	---

104	10A Interior lighting, energy saving system
-----	---

105	25A Heated rear window
-----	------------------------

106	20A Keyless entry system
-----	--------------------------

107	10A Instrument Cluster (Battery Powered) Diagnostic Connector (OBD II)
-----	--

108	7.5A Additional functions of the instrument cluster (audio and navigation systems)
-----	--

109	20A Cigarette lighter , rear socket
-----	-------------------------------------

110	10A Daytime running lights
-----	----------------------------

Diagram

111	15A Petrol: Fuel pump
112	15A Audio system (battery powered)
113	10A Daytime running lights (side light)
114	10A Instrument cluster, immobilizer
115	7.5A Power supply for external lighting controls from generator
116	20A Fog light
117	7.5A License plate lighting
118	20A Module electrical equipment left rear door
119	15A Luggage compartment socket
119	25A Socket in luggage compartment (with trailer module)
120	20A Electrical module right rear door
121	20A Heated front seats
122	10A Airbags
123	7.5A Heated mirrors
124	7.5A Side light left side
125	7.5A Side light on the right side
126	20A Keyless Control System
127	25A Power Windows
128	Not used
129	20A Windscreen wiper
130	Not used
131	15A Rear wiper
132	15A Brake light
133	25A Central locking relay, front passenger door electronics module
134	20A Central locking, driver's door electrical module
135	20A Daytime running lights
136	15A Washer pump, heated washer jets

Diagram

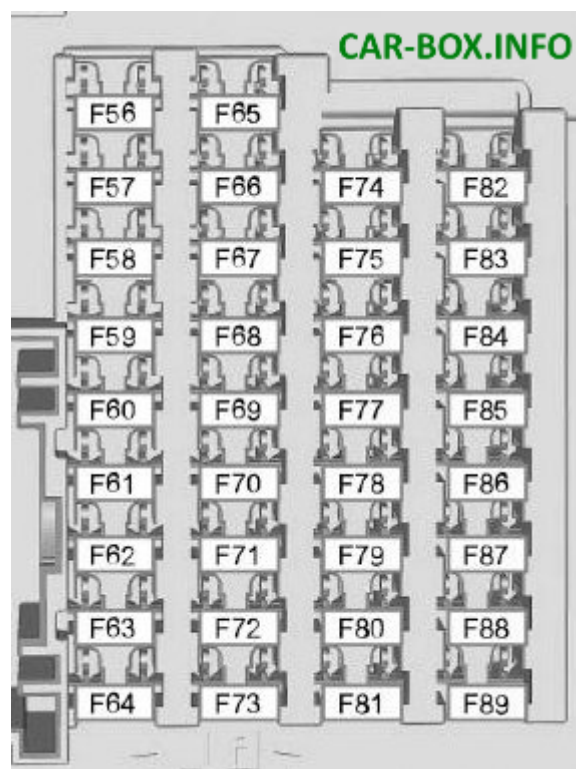
137	10A Loudspeaker for turning on the emergency battery
138	10A Engine control unit, transmission control unit, electric gas pedal
139	10A High beam, right headlight
140	10A High beam left headlight
141	10A Reversing lamps, power mirrors
142	15A Low beam right headlight
143	15A Low beam left headlight
R1	Fuel pump Relay
R2	Not used

The fuse 109 20A is responsible for the cigarette lighter.

Type 3

Models 2011 - 2017 release.

Diagram



Diagram

Diagram

№	Appointment
56	20A fuel pump
57	Not used
58	Not used
59	5A Transceiver passive anti-theft system
60	10A Interior lighting, driver's door control unit, glove box lighting, ambient lighting, overhead control unit
61	20A Cigarette lighter , rear socket
62	5A Rain sensor, humidity sensor, auto-dimming interior mirror
63	10A Adaptive cruise control system
64	Not used
65	10A Power tailgate latch release
66	20A Driver's door lock, double lock, fuel flap lock lock (2015-2018)
67	7.5A Infotainment display, SYNC module, GPS module, telephone (Energi)
68	15A Electric steering column lock
69	5A Instrument Cluster
70	20A Central locking
71	7.5 / 10A Air conditioning system, heater control unit (mechanical air conditioner (Hybrid, Energi))
72	7.5A Steering wheel module
73	5A Anti-theft system, diagnostic socket, battery of autonomous sound device
74	15A high beam
75	15A Front fog light
76	10A Reversing lamps
77	20A Windshield washer, rear window washer
78	5A Ignition switch, start button, keyless entry system
79	15A Hazard Switch, Radio, Navigation, Voice Control Module, DVD Player, CD Changer, Door Lock Switch
80	20A Hatch

Diagram

81 5A Interior sensor, RF radio, sun blinds

82 20A Glass washer pump

83 20A Central locking

84 20A Unlocking driver's door, double locking, unlocking fuel flap (2015-2018)

85 7.5A Radio, Navigation, Passenger Airbag Deployment Switch, Seat Heating Switch, Parking Heater, Heater Control Unit (Mechanical Air Conditioning), Rear Wiper Relay, Auxiliary Heater, Adaptive Cruise Control

86 10A Airbag and seatbelt control module, passenger presence recognition, passenger airbag indicator

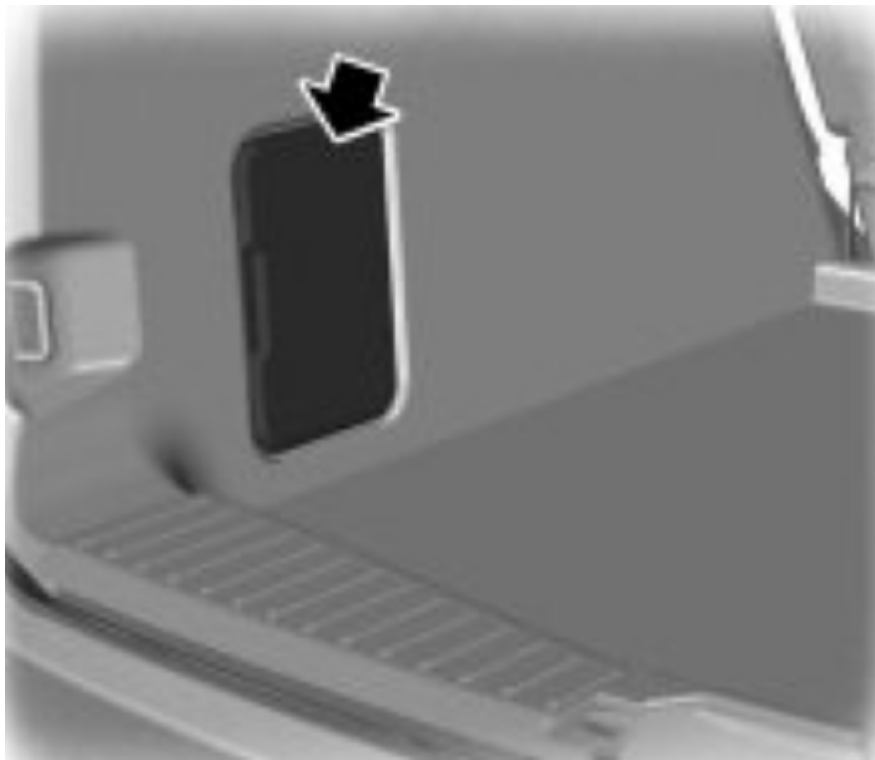
87 15A Heated steering wheel

88 20A Voltage quality module

89 Not used

A fuse 61 for 20A is responsible for the cigarette lighter.

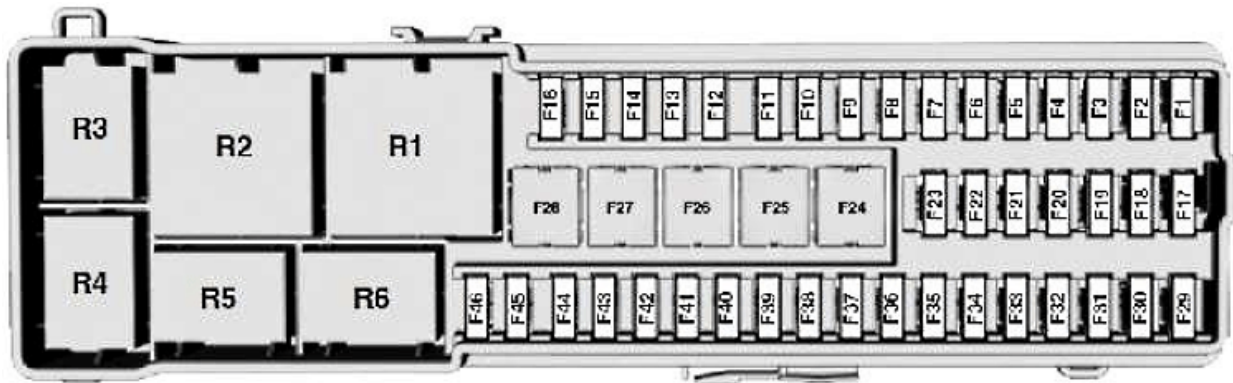
In the luggage compartment



Location.

Diagram

Diagram



No	Decoding
1	5A Hands-free tailgate opening
2	10A Keyless Entry System
3	5A Door handles on vehicles with keyless entry system
4	25A Door module (front left) (power window, central locking, power folding mirrors, heated mirrors)
5	25A Door module (front right) (power window, central locking, power folding mirrors, heated mirrors)
6	25A Door module (rear left) (power window)
7	25A Door module (rear right) (power window)
8	10A Anti-theft system 25A Electric passenger seat
9	25A Power driver's seat
10	25A Power windows, Heated rear window
11	5A Ignition relay
12	10A Air Conditioning, 15A Battery Control Unit
13	5A Instrument Cluster
14	7.5 / 10A Infotainment display, GPS module (with start / stop module), Charging system
15	15A Audio system
16	Not used
17	10A Battery control unit
18	15A Battery Control Unit - Fan

Diagram

19	15A Energi: Charging fan
20	Not used
21	10 / 15A Smart connector
22	10A Active noise cancellation
23	Not used
24	30A DC / AC converter
25	25A Power luggage compartment door
26	40A Trailer module, AC / DC charging
27	20 / 30A Heated rear window, Luggage compartment socket
28	Not used
29	5A Blind Spot Monitoring System, Lane Lane Compliance System, Active City Stop System, Rear View Camera (without engine start / stop module), ignition (with engine start / stop system)
30	5A Parking aid module
31	5A Rear view camera
32	5A DC / AC converter
33	15A Rear wiper relay
34	15A Heated driver's seat
35	15A Heated passenger seat
36	Not used
37	20A Sunroof sun protection panel
38	Not used
39	Not used
40	Not used
41	Not used
42	Not used
43	Not used
44	10A Power mirrors

Diagram

45 7.5A Heated mirrors 5A Humidity sensor

46 5A Blind Spot Monitor, Lane Lane Compliance System, Rear View Camera (with Engine Start / Stop System) 10A Fuel System

R1 Ignition switch, terminal 15

R2 Heated rear window

R3 Rear wiper, Fuel flap

R4 -

R5 Anti-theft alarm siren

R6 Auxiliary relay, Rear wiper
